

Town & Country

ESTABLISHED IN 1846

SPECIAL SECTION
HOW TO STAY
YOUNG & HEALTHY

THE QUALITY ISSUE

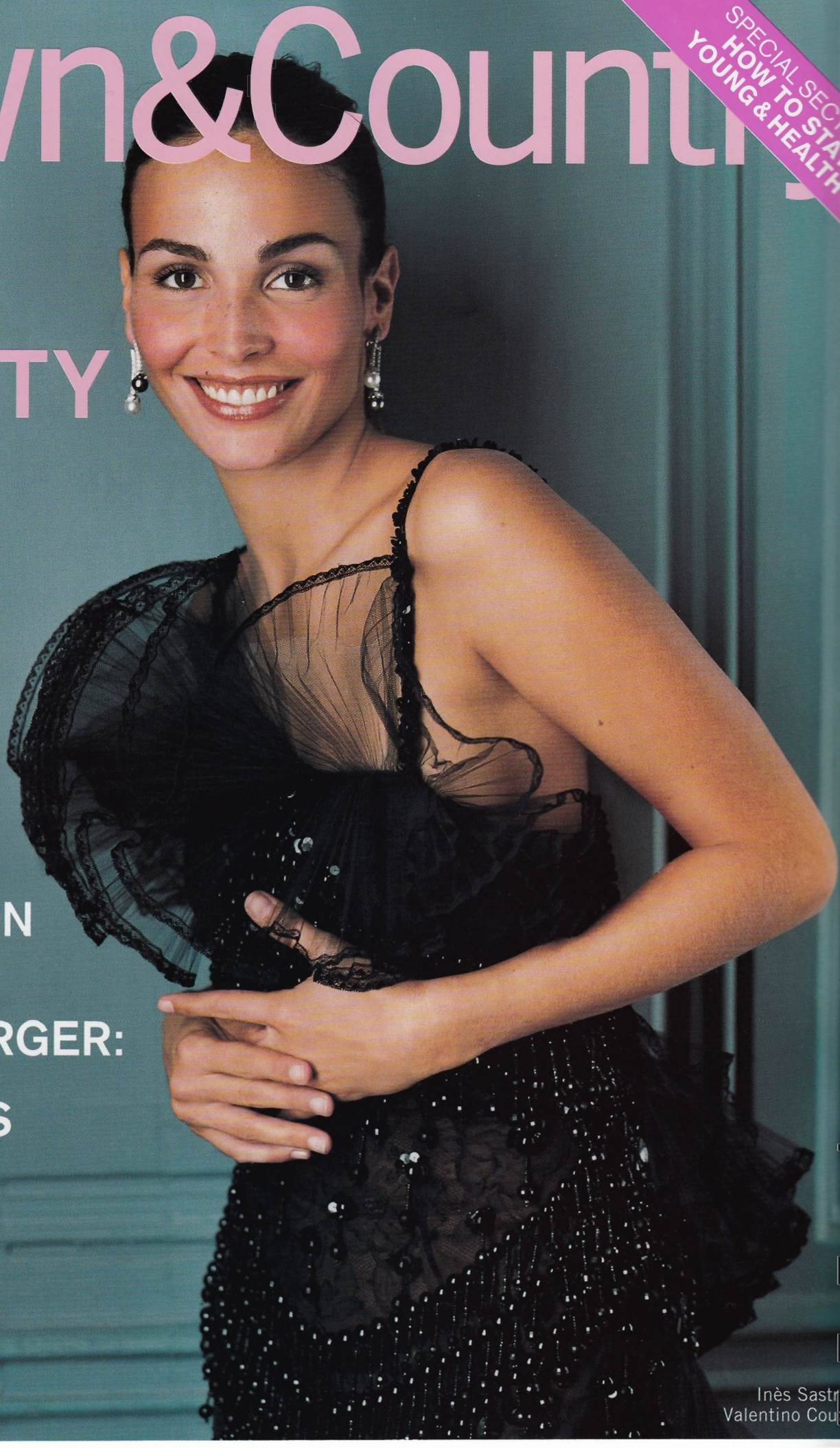
THE ART OF
HAUTE
COUTURE

TANZANIA
IN HIGH
STYLE

NATASHA
RICHARDSON
AT HOME

SCHLUMBERGER:
THE JEWEL
IN TIFFANY'S
CROWN

NOVEMBER 2001
U.S. \$4.00 CANADA \$5.00
FOREIGN \$5.00



Inès Sastr
Valentino Cou

ANTHONY COCHRAN DESIGN

10/17/2001

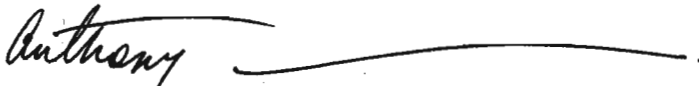
D&F Workroom
150 West 25th Street
New York, NY 10001

To Carl, Coleen, and the entire staff of D&F Workroom,

I cannot begin to thank you enough for the amazing work you produced for Liam and Natasha's apartment! The quality is superb, the level of comfort is soothing, the detail is perfection, and the subtlety is calming.

I could have never, ever done it without you!!!!!!

Sincerely,

A handwritten signature in cursive script that reads "Anthony". The signature is followed by a long, horizontal, slightly wavy line that extends to the right.

Anthony Cochran

page 1

PRIVATE LIVES



ACTORS NATASHA RICHARDSON AND LIAM NEESON
WRITE THEIR OWN INTIMATE, FAMILY-FRIENDLY SCRIPT
IN A NEW MANHATTAN APARTMENT.

BY MARILYN BETHANY
PHOTOGRAPHS BY WILLIAM ABRANOWICZ

Cochran planned the living room around a pair of sofas by Christian Liaigre for Holly Hunt and vintage armchairs from Aero. Liam's contribution, an old Indonesian door he'd had for years, became a coffee table. The custom console (opposite) was assembled on site.





Leslie from the floor of
the Ligonoro Canal. The
world's largest urban park

